

PLAZA ON THE LAKE

OFFICE ON LAKE AUSTIN



LOCATION *Highlights*

SETTING

Austin's ONLY Class A Building
located DIRECTLY on the Lake

VIEWS & VISIBILITY

Views of and visibility from Lake
Austin and Pennybacker Bridge



BUILDING *Features*

**ABUNDANT OUTDOOR
AMENITY SPACE**

**BUILDING WIFI IN
COMMON AREAS**

**ON-SITE
MANAGEMENT**

**FITNESS CENTER &
LOCKER ROOMS**

**PADDLE BOARD/
KAYAK STORAGE**



VICINITY MAP & Area Amenities

DAVENPORT VILLAGE



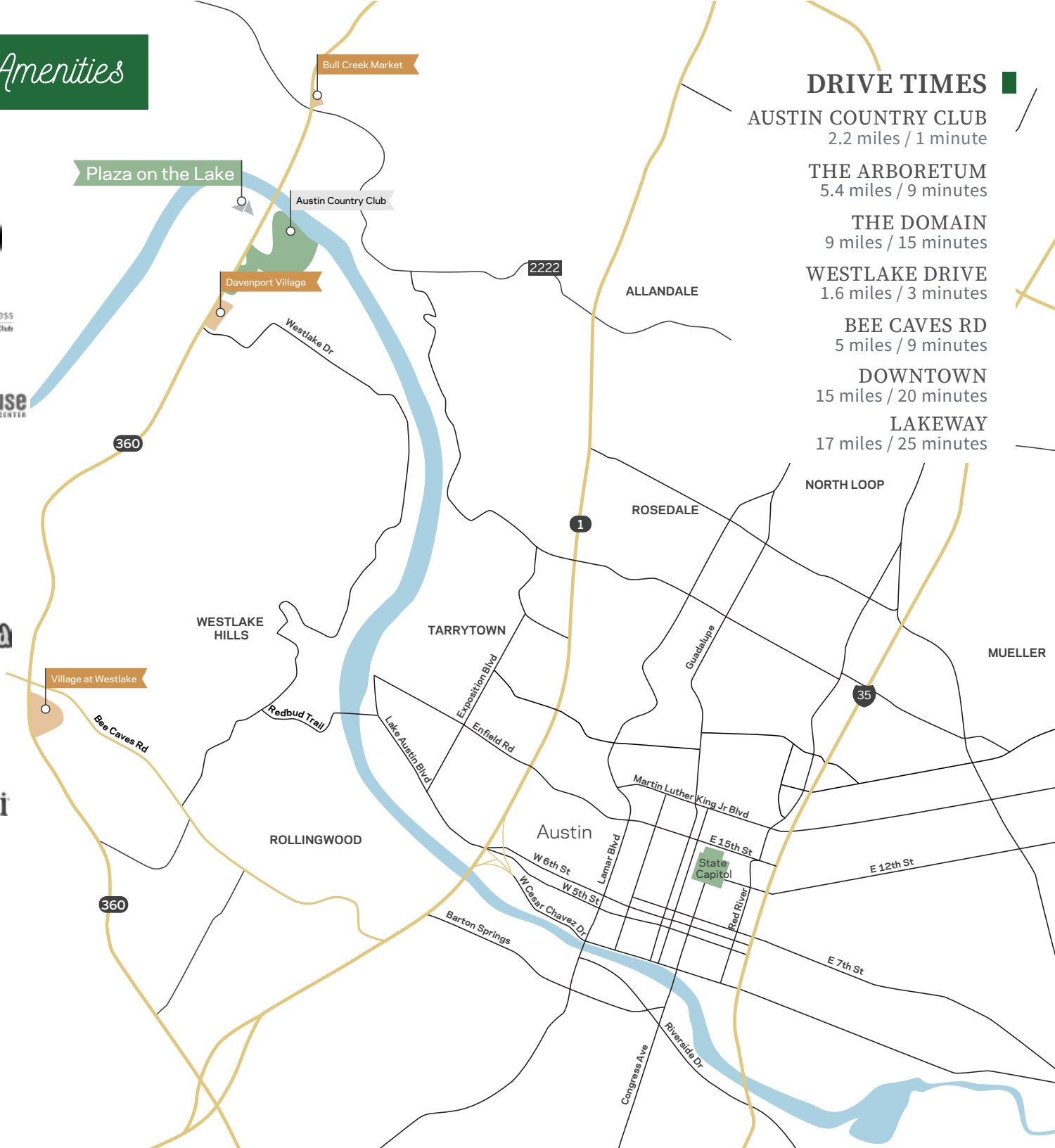
VILLAGE AT WESTLAKE



BULL CREEK MARKET



DRIVE TIMES	
AUSTIN COUNTRY CLUB	2.2 miles / 1 minute
THE ARBORETUM	5.4 miles / 9 minutes
THE DOMAIN	9 miles / 15 minutes
WESTLAKE DRIVE	1.6 miles / 3 minutes
BEE CAVES RD	5 miles / 9 minutes
DOWNTOWN	15 miles / 20 minutes
LAKEWAY	17 miles / 25 minutes

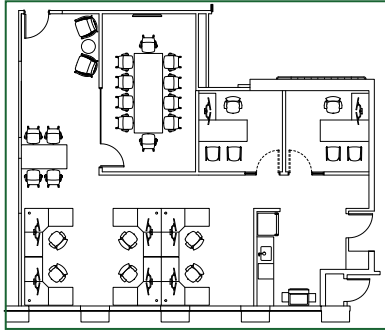


FIRST FLOOR *Availabilities*

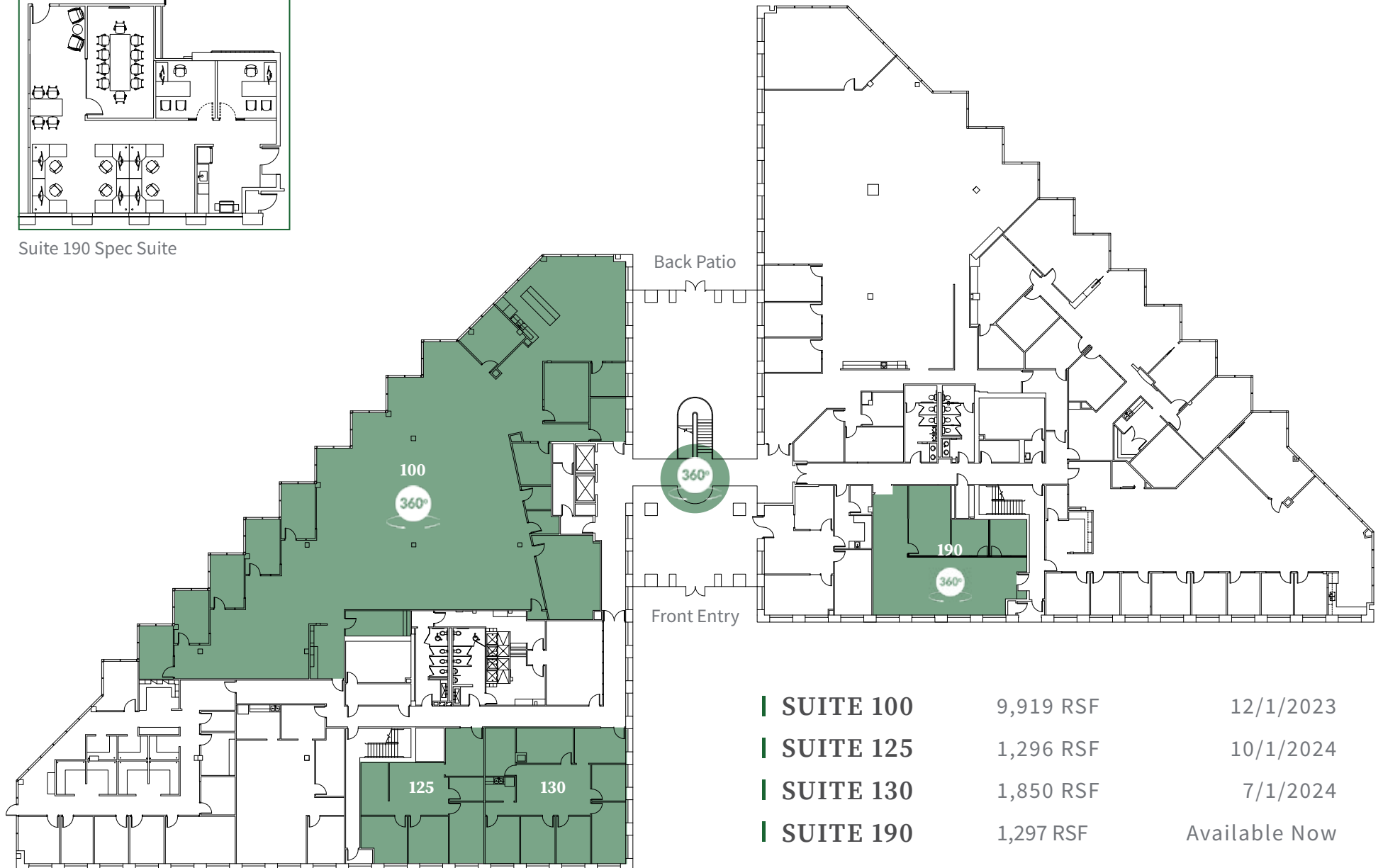
← Wildlife Preserve

↑ Lake Austin ↑

360 Bridge →



Suite 190 Spec Suite



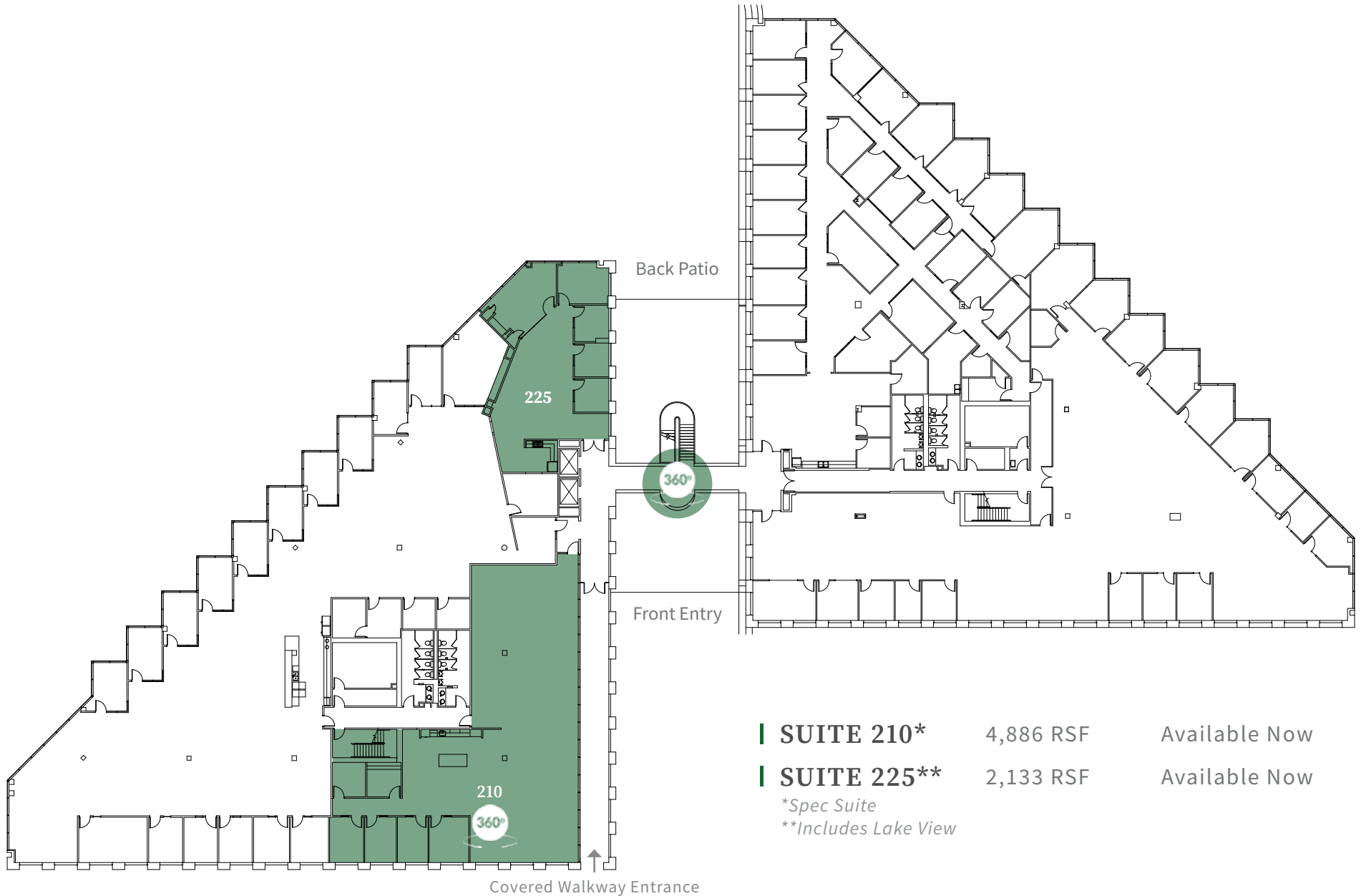
SUITE 100	9,919 RSF	12/1/2023
SUITE 125	1,296 RSF	10/1/2024
SUITE 130	1,850 RSF	7/1/2024
SUITE 190	1,297 RSF	Available Now

SECOND FLOOR *Availabilities*

← Wildlife Preserve

↑ Lake Austin ↑

360 Bridge →

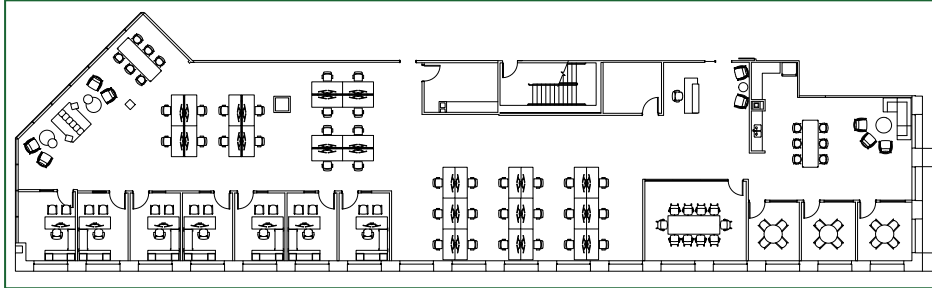


THIRD FLOOR *Availabilities*

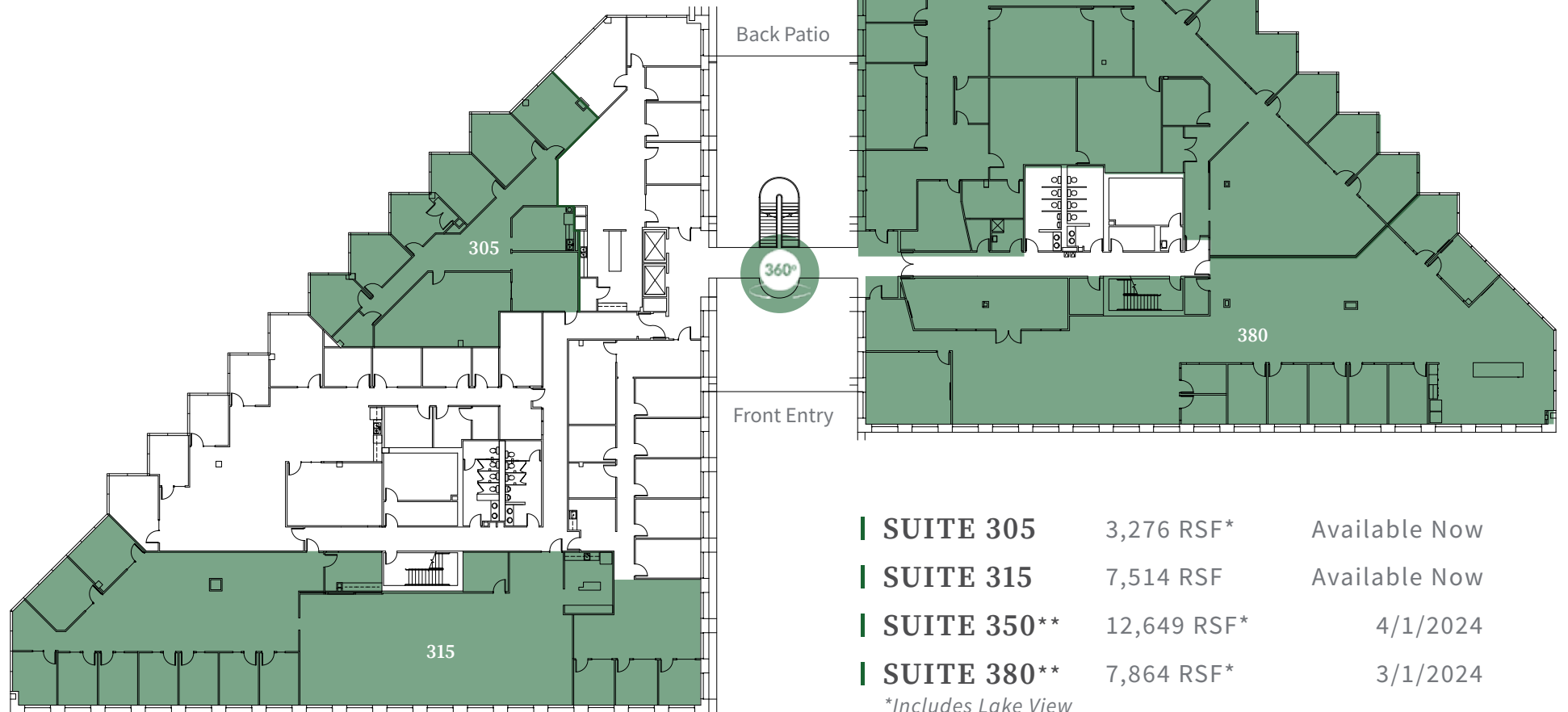
← Wildlife Preserve

↑ Lake Austin ↑

360 Bridge →



Suite 315 Possible Floor Plan



SUITE 305	3,276 RSF*	Available Now
SUITE 315	7,514 RSF	Available Now
SUITE 350**	12,649 RSF*	4/1/2024
SUITE 380**	7,864 RSF*	3/1/2024

*Includes Lake View

**Max Contiguous to 20,513 RSF

LEASED BY:



OWNED BY:



FOR LEASING INFORMATION

Anne Swift

aswift@endeavor-re.com

O: 512-682-5579

M: 512-699-8811

Elisabeth Kleberg

ekleberg@endeavor-re.com

O: 512-532-2177

M: 210-844-1367